



SIEBTECHNIK TEMA



PERFLUX & SKS control screening machines

For the reliable separation of foreign bodies

CONTROL SCREENING MACHINES

Undetected foreign substances or impurities in powders and suspensions such as screws, cleaning cloths, paper shreds or agglomerates may result in machine downtime or expensive repairs to machine and equipment components. Protect your production processes with our control screening machines.

Our machines are already used in the following industries:

- ◆ construction materials industry
- ◆ paint industry
- ◆ chemicals industry
- ◆ food industry
- ◆ powder processing in 3D printing
- ◆ and many more



PERFLUX 501
with hopper tray for
paint screening

CONTROL SCREENING MACHINE FOR SUSPENSIONS SKS

If high-viscosity products containing solvents have to be screened under pressure, the SKS is a screening system that reliably removes foreign substances, impurities or agglomerates.

The SKS is used for

- ◆ high-viscosity, thixotropic materials, e.g. boat paints
- ◆ suspensions with abrasive foreign bodies, e.g. ceramic slurry or facade paints



SKS 202 with diaphragm pump

Technical data

SKS		202
Dimensions (W x H x L)	mm	605 x 400 x 660
Screen insert (Ø x L)	mm	190 x 406
Slot/screen width		20 µm – 2 mm
Unbalance motors	kW	2 x 0.2
Max. pressure	bar	5
Weight including screen insert	kg	90



The suspension is fed into the SKS centrally from above and flows through a slotted filter cylinder or fabric filter cylinder from the inside

to the outside. The foreign substances are held back by the filter insert, where they are collected. The fraction held back by the filter is oscillated by two unbalance motors so that there is no need for mechanical cleaning using screws, paddles or similar. The unwanted material that was held back by the filter cylinder can be discharged via a discharge valve.

CONTROL SCREENING MACHINES

PERFLUX

Depending on the application, the PERFLUX control screening machine can be supplied with

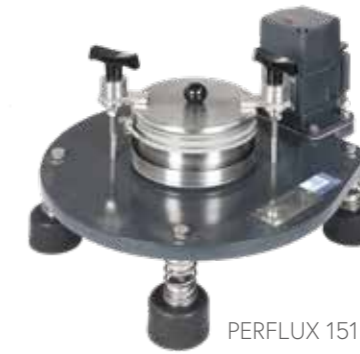
- ◆ screening disc with and without oversized particle discharge for dry screening
- ◆ screening disc without oversized particle discharge for wet screening
- ◆ screening disc for individual covering
- ◆ cover and hopper for dust-free integration into the process flow
- ◆ equipment for use in hazardous areas in accordance with ATEX 100
- ◆ brush/scrapper unit for screening materials that are difficult to screen or for breaking down agglomerates
- ◆ bag tray for screening materials delivered in bags
- ◆ various base frames



PERFLUX 501
with brush unit

The PERFLUX offers

- ◆ highly efficient, high-performance screening with just one drive which generates a tumbling oscillation movement
- ◆ compact size
- ◆ aluminum or stainless steel frame
- ◆ hopper and screen inserts that can be removed without tools



PERFLUX 151

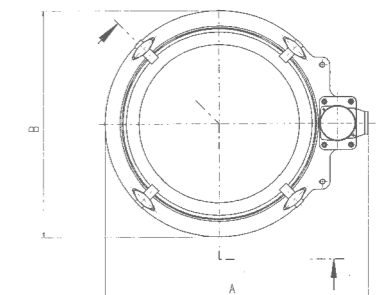
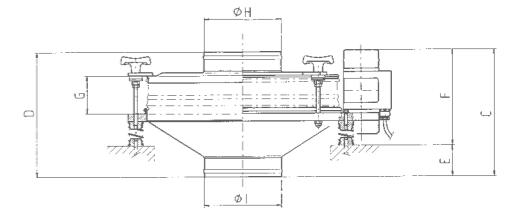


PERFLUX 301
in a special design variation

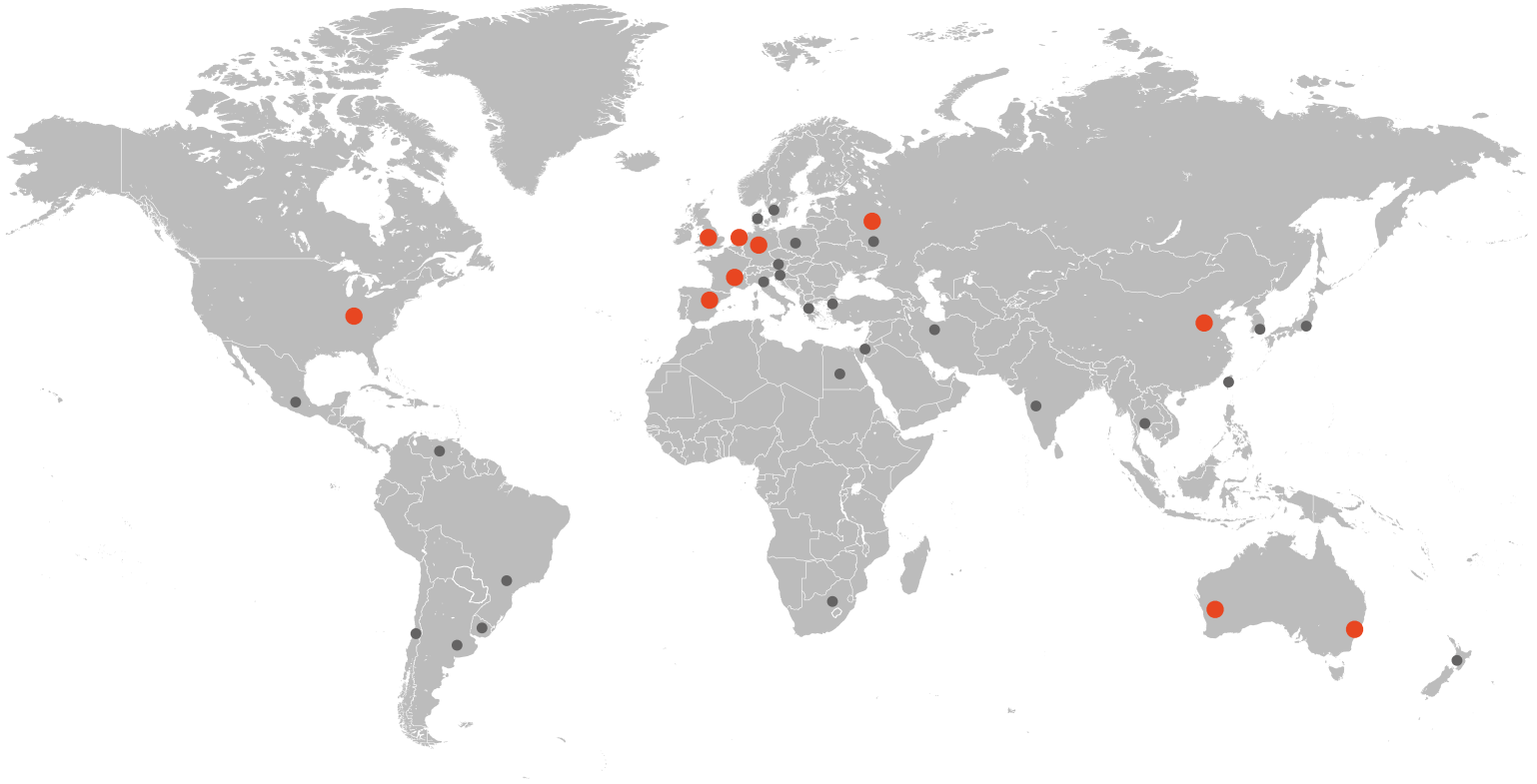
Technical data

PERFLUX		151	301	501	801
Screen diameter	mm	150	300	500	800
Screen width	µm	> 40	> 40	> 63	> 63
Motor	kW	0.16	0.16	0.16	0.50
Weight including screen, cover and hopper	kg	approx. 18	approx. 20	approx. 25	approx. 60
Dimensions in mm	A	490	490	690	1182
	B	400	400	600	948
	C	261	302	335	410
	D	235	285	330	420
	E	10	50	82	114
	F	250	252	252	296
	G	100	85	100	131
	H	50	100	200	200
	I	50	100	200	200

Dimensions non-binding.



One Solution. Worldwide.



SIEBTECHNIK TEMA provides more than 50 local support offices worldwide as well as main sites located in:

Mülheim an der Ruhr, Germany | Rijswijk / The Hague, The Netherlands | Madrid, Spain
Daventry, Great Britain | Mundolsheim, France | Sydney & Perth, Australia | Cincinnati, USA
Tianjin, China | Moscow, Russia

We are experts in the field of solid-liquid separation and the processing of bulk materials

Automation | Channel conveyors | Crushing & Milling Equipment | Control Screening Machines
Decanter | Dryers | Laboratory Equipment | Pneumatic Tube Systems | Preparation Systems
Process Equipment | Pulsator Jigs | Pusher Centrifuges | Sampling Systems | Screening
Machines | Screen Worm Centrifuges | Sliding Centrifuges | Vibrating Centrifuges